

# PRODUCT SUMMARY



## DRIBO, spol. s r.o.

Company **DRIBO, spol. s r.o.** based in Brno, was founded in 1995. Our focus is the manufacture and sale of medium voltage electrical switching devices and switchgears for voltage levels up to 38.5 kV. We also supply remote control systems for circuit breakers, load break switches or distribution substations. Our products find their application in the distribution networks of energy companies, as well as in industry or transport infrastructure within traction equipment.

We draw on the expertise of our parent company **DRIESCHER**, a German manufacturer of medium-voltage switching devices with a tradition of more than 100 years, but also on the extensive experience of our designers. Our aim is to supply quality switchgear with the maximum possible customisation depending on customer needs. We are able to supply customised devices either in terms of adjusting dimensions, or by adapting the function of the device itself. We offer the possibility of consultation and solution proposals.

We hold certificates for quality management, environmental management, occupational health and safety management and information security management. The quality of the materials used and the care taken in production guarantee low operating and maintenance costs.

Detailed product information can be found at  
<http://www.dribo.eu>



### Outdoor circuit breakers – reclosers

- rated voltage 25 and 38,5 kV
- rated current up to 800 A
- including delivery of the control system



### Outdoor load break switches with oil quenching chambers Fla 15/60

- rated voltage 25 and 38,5 kV
- rated current 400 and 630 A
- horizontal and vertical design
- also designed for doubled, insulated and ecological power lines
- possibility of under voltage assembly



### Outdoor load break switches with vacuum chambers Fla 15/97

- rated voltage 12, 25 and 38,5 kV
- rated current 400 and 630 A
- horizontal and vertical design
- also designed for doubled, insulated and ecological power lines
- possibility of under voltage assembly



### Outdoor load break switches with quenching horns Flb

- rated voltage 25 and 38,5 kV
- rated current 400 and 630 A
- horizontal and vertical design
- also designed for ecological power lines



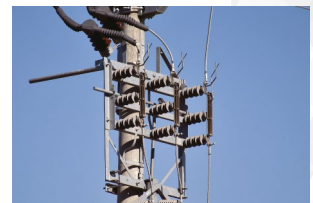
### Outdoor load break switches with spring based quenching system Flc

- rated voltage 25 and 38,5 kV
- rated current 400 and 630 A
- horizontal and vertical design
- also designed for doubled, insulated and ecological power lines
- possibility of under voltage assembly



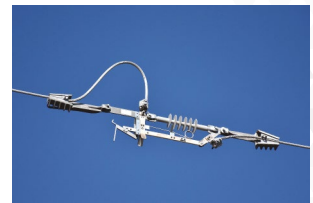
### Outdoor disconnectors FTr and earthing switches FES

- rated voltage 25 and 38,5 kV
- rated current up to 6300 A
- horizontal and vertical design
- three- and single-pole design



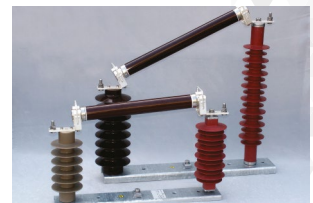
### Outdoor disconnectors into the power lines Flr

- rated voltage 25 and 38,5 kV
- rated current up to 1200 A
- single-pole design for mounting on a console and within the range of the line span
- possibility of under voltage assembly



### Outdoor fuse bases

- rated voltage 25 and 38,5 kV
- for fuses up to 200 A
- various designs
- with or without surge arresters



### Outdoor load break switches and disconnectors for railways

- rated voltage up to 29 kV
- rated current up to 3150 A
- horizontal and vertical design
- design for AC and DC traction



### Indoor circuit breakers

- rated voltage 12, 25 and 38,5 kV
- rated current up to 2500 A
- bases and carts



### Indoor load break switches H 22

- rated voltage 12, 25 and 38,5 kV
- rated current 630 and 1250 A
- designed for various applications



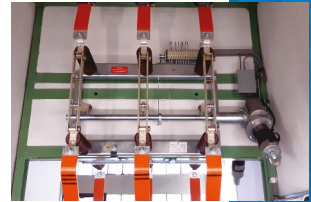
### Indoor load break switches H 27

- rated voltage 12 and 25 kV
- rated current 630 A
- designed for various applications



### Indoor disconnectors ITr, transfer switches ITrp and earthing switches ES

- rated voltage 12, 25 and 38,5 kV
- rated current 6300 A
- designed for various applications



### Indoor fuse bases

- rated voltage 12, 25 and 38,5 kV
- option of indication of the tripped state



### Indoor load break switches and disconnectors for railways

- rated voltage up to 27 kV
- rated current up to 4000 A
- design for AC traction



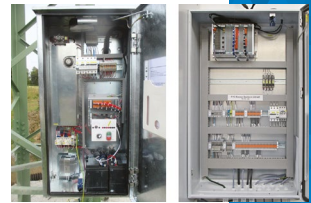
### Indoor disconnectors for low voltage and traction

- rated voltage 1,5 and 3 kV
- rated current up to 6300 A
- earthing switches, transfer switches
- use in LV networks or for DC traction



### System of remote controlled stations in medium voltage networks

- for outdoor circuit breakers (reclosers) and load break switches
- for MV substations
- complex delivery



### Hand and motor operated drives

- for outdoor switching devices
- for indoor switching devices
- different drive designs according to device assembly
- design for reconstruction – replacement of drives of older devices



### Switchgears D12 and D24, compact design

- air-insulated
- rated voltage 12 and 25 kV
- rated current 630 A
- with H 27 load break switches



### Switchgears F24

- air-insulated
- rated voltage 25 kV
- rated current 630 A
- with H 27 load break switches



### Switchgears W12, W24 and W38,5

- air-insulated
- rated voltage 12, 25 and 38,5 kV
- rated current 630 and 1250 A
- with circuit breakers or H 22 and H 27 load break switches



### Switchgears K900

- air-insulated
- rated voltage 25 kV
- rated current 630 A
- with load break switch or fuse base



### Retrofits of switchboards and medium voltage substations

- replacement of load break switches
- replacement of disconnectors' drives
- easy and cheap old technology replacement



### Low voltage and medium voltage fuses

- rated voltage up to 38,5 kV
- rated current up to 630 A
- for outdoor and indoor switching devices



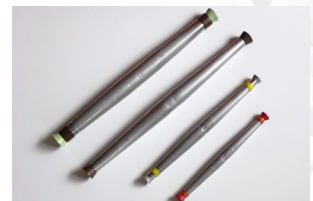
### Medium voltage and high voltage insulators

- supporting and tension insulators
- insulators made of cycloaliphatic epoxy resin
- composite (silicone) insulators
- insulating plates



### Medium voltage quick couplings

- for connecting and terminating wires
- for steel, copper, aluminium and AlFe wires



### Accessories

- fuse reductions and adapters
- inlets and clamps for live works
- voltage and current sensors



D R I B O



B R N O

**DRIBO, spol. s r.o.**

Pražákova 36  
619 00 Brno  
Czech Republic

**Phone:**+420 533 101 111

**Phone:**+420 543 321 111

<http://www.dribo.eu>